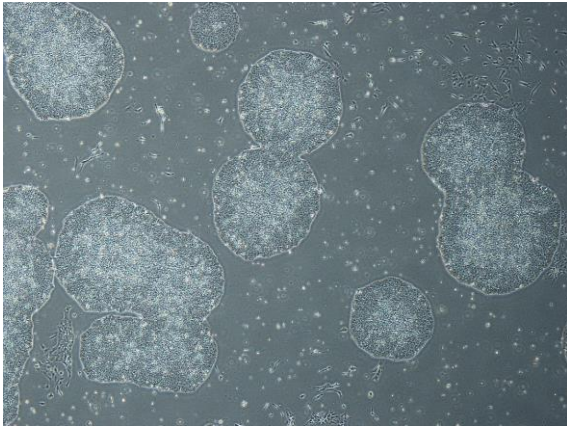
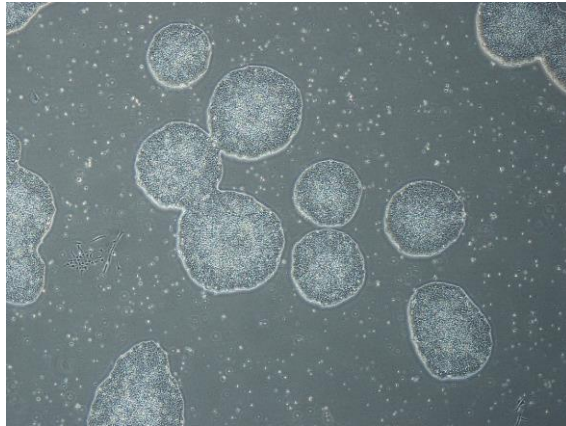


【 CiRA-j-1405 】 Morphology of iPSC colonies

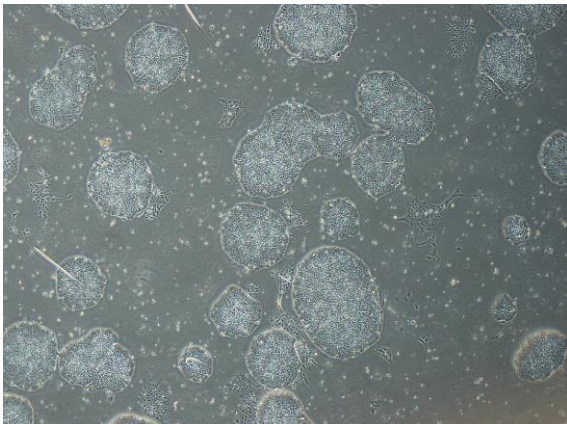
CiRA-j-1405-A: passage-3



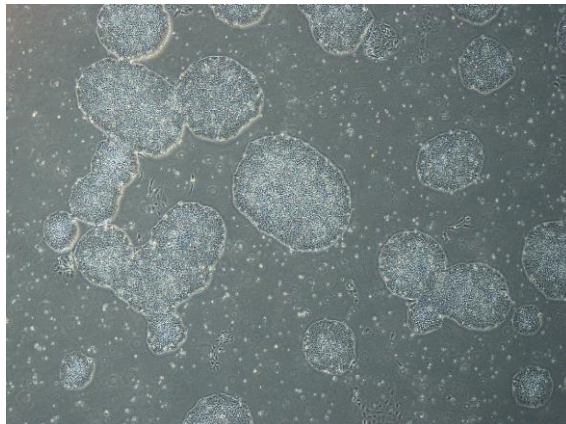
CiRA-j-1405-B: passage-3



CiRA-j-1405-C: passage-3



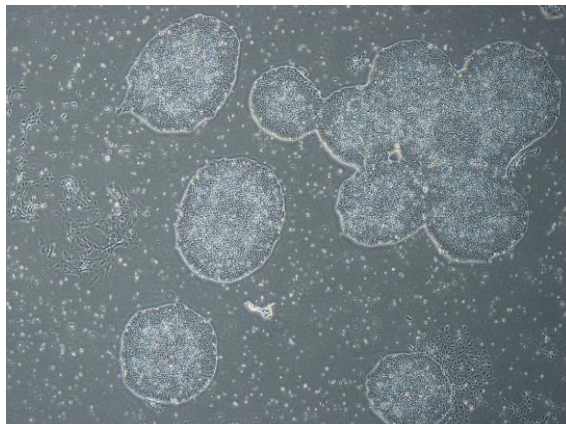
CiRA-j-1405-D: passage-3



CiRA-j-1405-E: passage-3



CiRA-j-1405-F: passage-3



(All images were captured at 4x magnification)